

# Stimulation-related activation in the thalamus

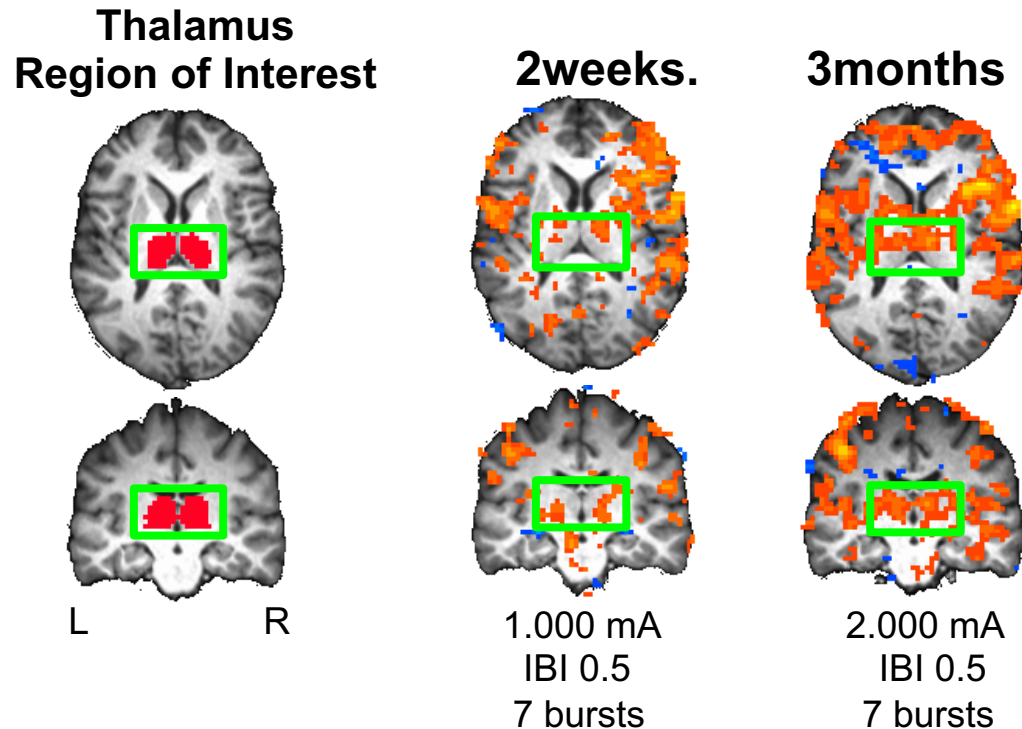


Figure 1: The combination of parameters inducing the strongest thalamic activation when comparing VNS ON vs. OFF was prescribed to the patient at 2weeks and 3 months post-implantation. Legend: ROI, region of interest ie. thalamus in green box. Top row: axial slices; bottom row: coronal slices in Talairach standardized coordinate space. L= left hemisphere, R=right hemisphere.